



Mission & Overview

- Performance
- Innovation
- Environment

Benefits of Additives in Asphalt

- Performance
- Durability
- Sustainability
- Bid Advantage

What is NewRoad® Additive?

- Engineered blend of recycled plastics
- Increased strength and moisture resistance, decreased rutting and cracking distresses
- Thoroughly tested
 - Lab data over 7 years
 - Field testing over 5 years



Concerns about Plastics in Asphalt

- Microplastics
- Emissions
- Health/Safety

Microplastics Testing of Asphalt

HWTT



EMSL Analytical, Inc.

Attn.: Andrew LaCroix
NVI Advanced Materials Group
500 Innovation Drive
Blairsville, PA. 15717
alacroix@nviang.com
Phone: 919-971-3465

5700 Memorial Highway, Suite 122, Tampa, FL 33615
200 Route 130 North, Cinnaminson, NJ 08077
Phone: (813)-280-8752 (856) 658-4900

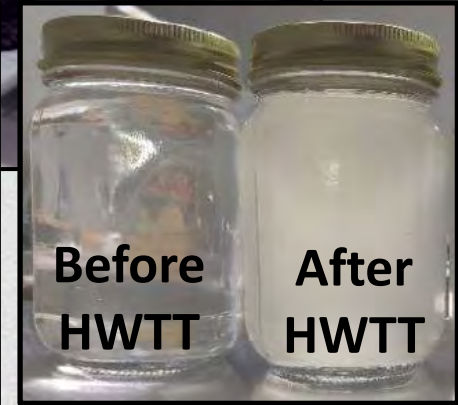
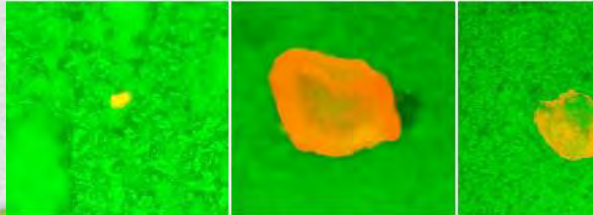
EMSL Order No.: 362100147
Sample(s) Received: 1/15/2021
Date Reported: 1/29/2021
Date Printed: 1/29/2021
Reported By: J.Newton



- Laboratory Report -

Analysis of Microplastic Particles

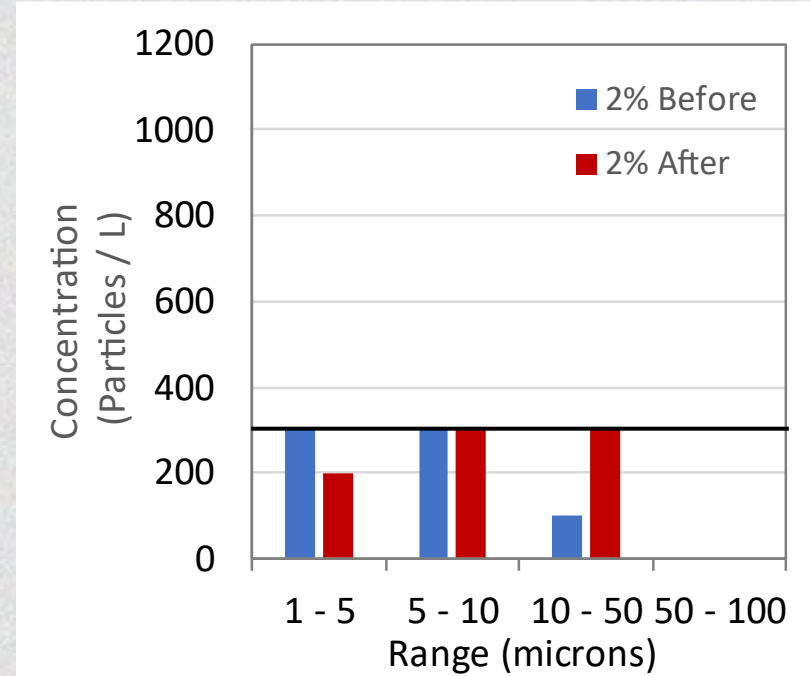
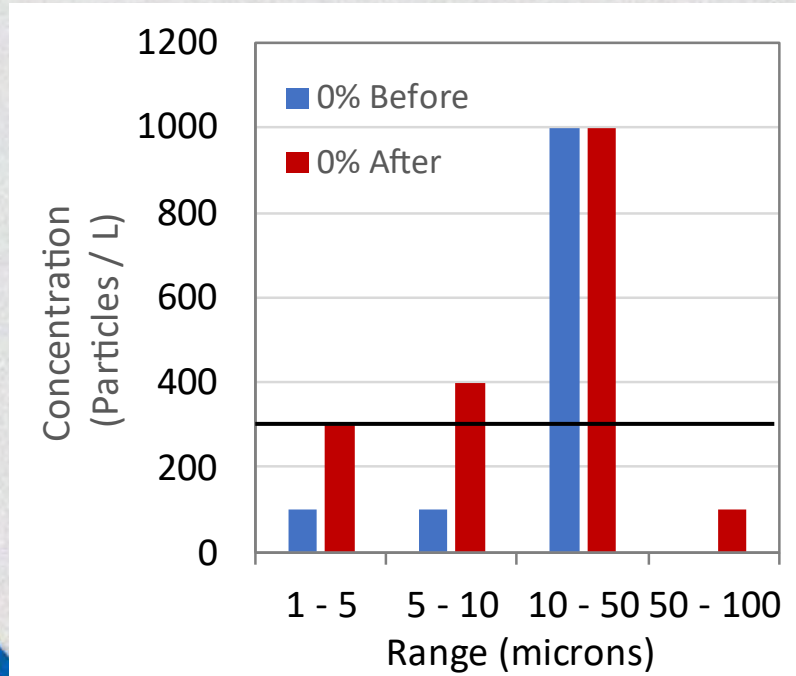
Project: Hamburg-01-2021



Microplastics Distribution

Control – 0%

NewRoad – 2%



Emissions

- Material
 - no change (G. White, 2019)
- In lab
 - no change (mix with binder)
- In plant
 - no change

Health/Safety

- SDS



GWP (GHG)

- Polymer-modified asphalt (PMA)
 - 75% less GHG than virgin polymer modifiers
 - 20% less GHG per ton of mix
- Carbon neutral for unmodified mixture

EPD

- Under development

Questions?

- Contact Info
 - Andrew LaCroix (alacroix@nviamg.com)

Ridley Creek State Park - PA

- Rehab - 2021
- 2" for 0.5 mile / 1.5 mile
- Partnership
 - PennDOT
 - DCNR
 - PA-EPA

