

# 2023 PAPA REGIONAL TECHNICAL MEETINGS

## PENNDOT QUALITY ASSURANCE ASPHALT PAVING FINDINGS



**MARK GALLARDO – QA TEAM LEADER DISTRICTS 1 & 11**

**BRENT TRIVELPIECE – QA DIVISION CHIEF**

**BILL EIBACH, P.E. – QA TEAM LEADER DISTRICTS 5 & 6**

**WESTERN REGIONAL MARCH 14, 2023**

**CENTRAL REGIONAL MARCH 15, 2023**

**EASTERN REGIONAL MARCH 16, 2023**

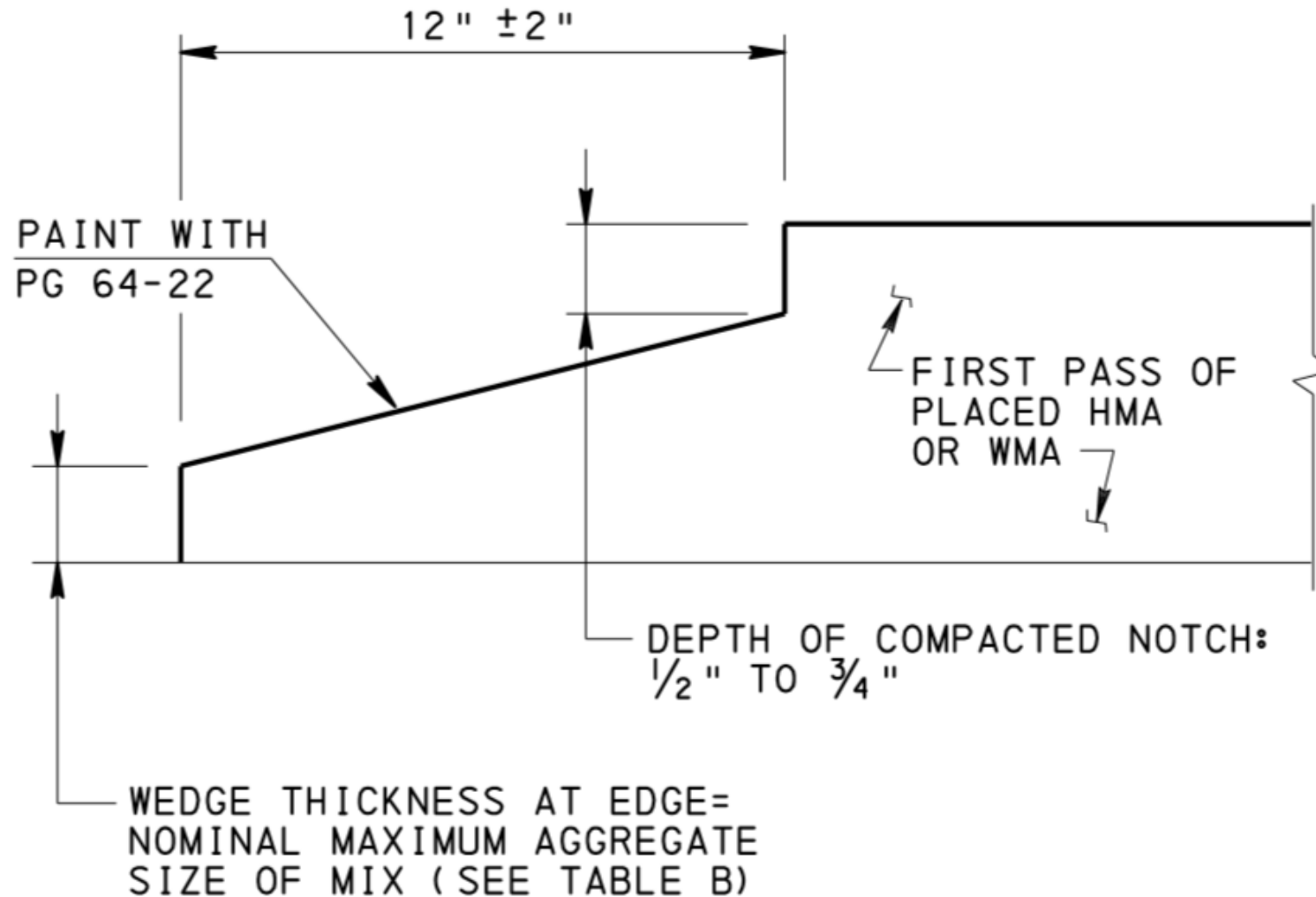
# NOTCHED WEDGE JOINT CONSTRUCTION



# NOTCHED WEDGE JOINT CONSTRUCTION



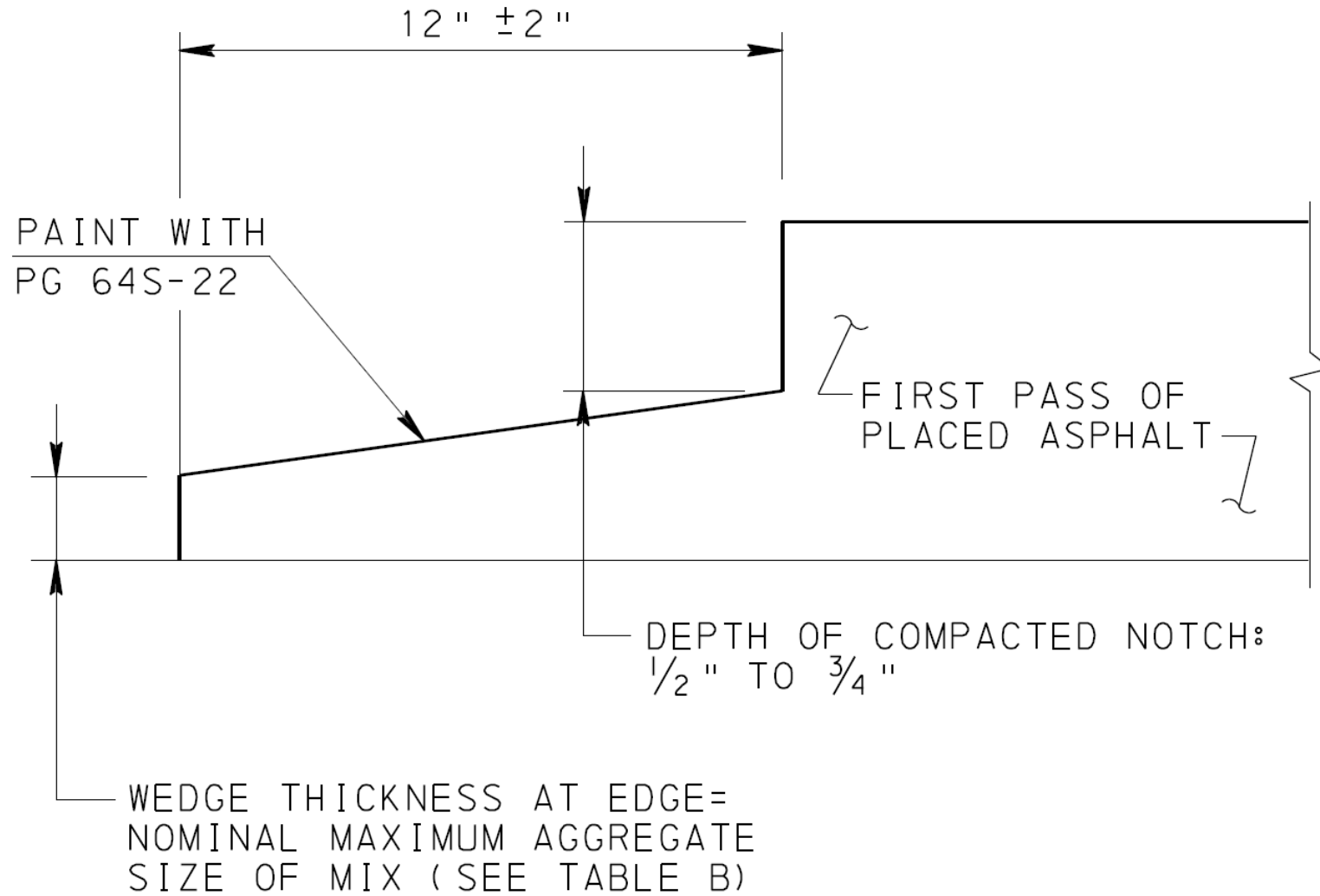
# RC-28M LONGITUDINAL NOTCHED WEDGE JOINT



LONGITUDINAL NOTCHED WEDGE JOINT



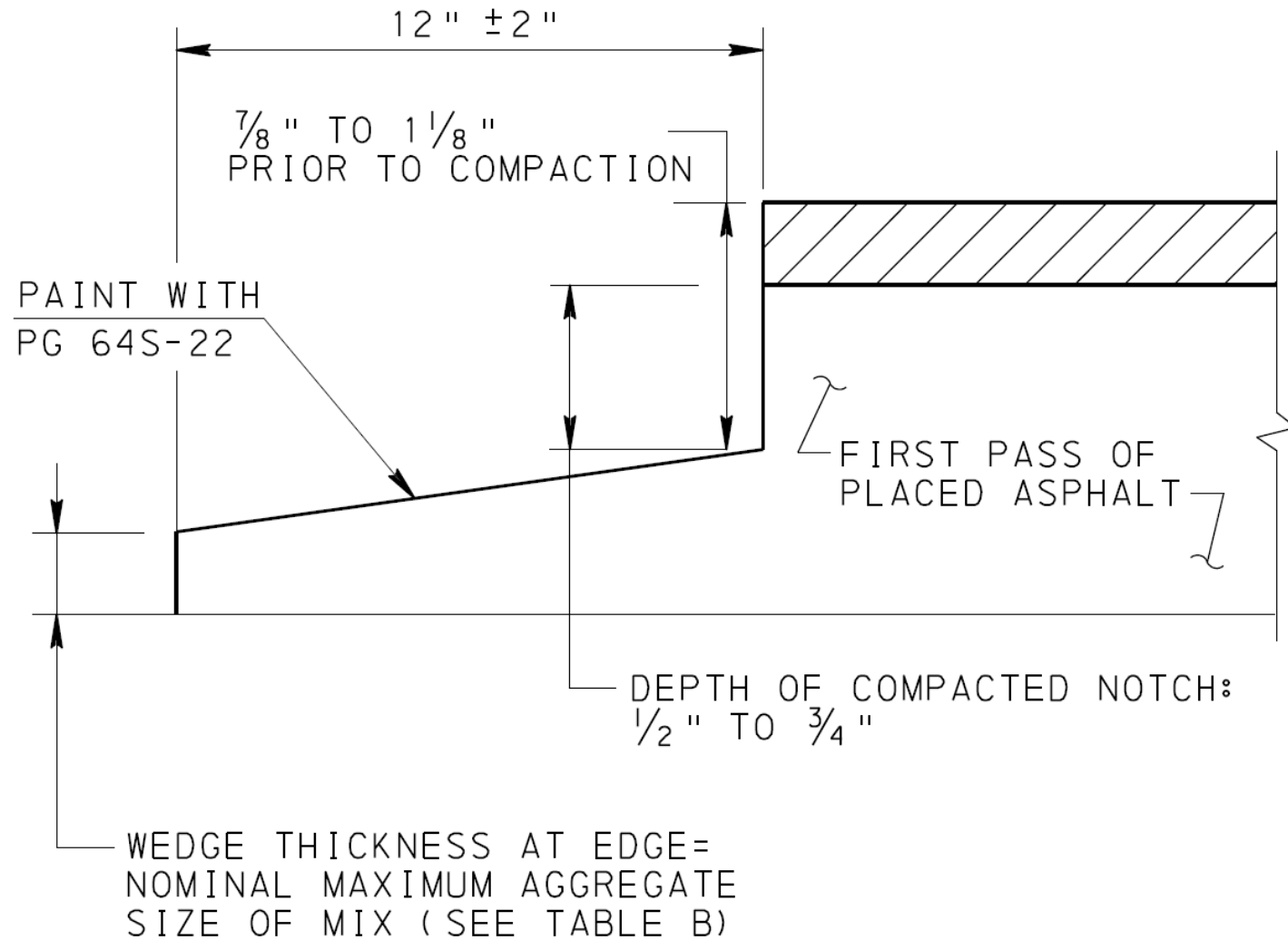
# RC-28M LONGITUDINAL NOTCHED WEDGE JOINT



LONGITUDINAL NOTCHED WEDGE JOINT



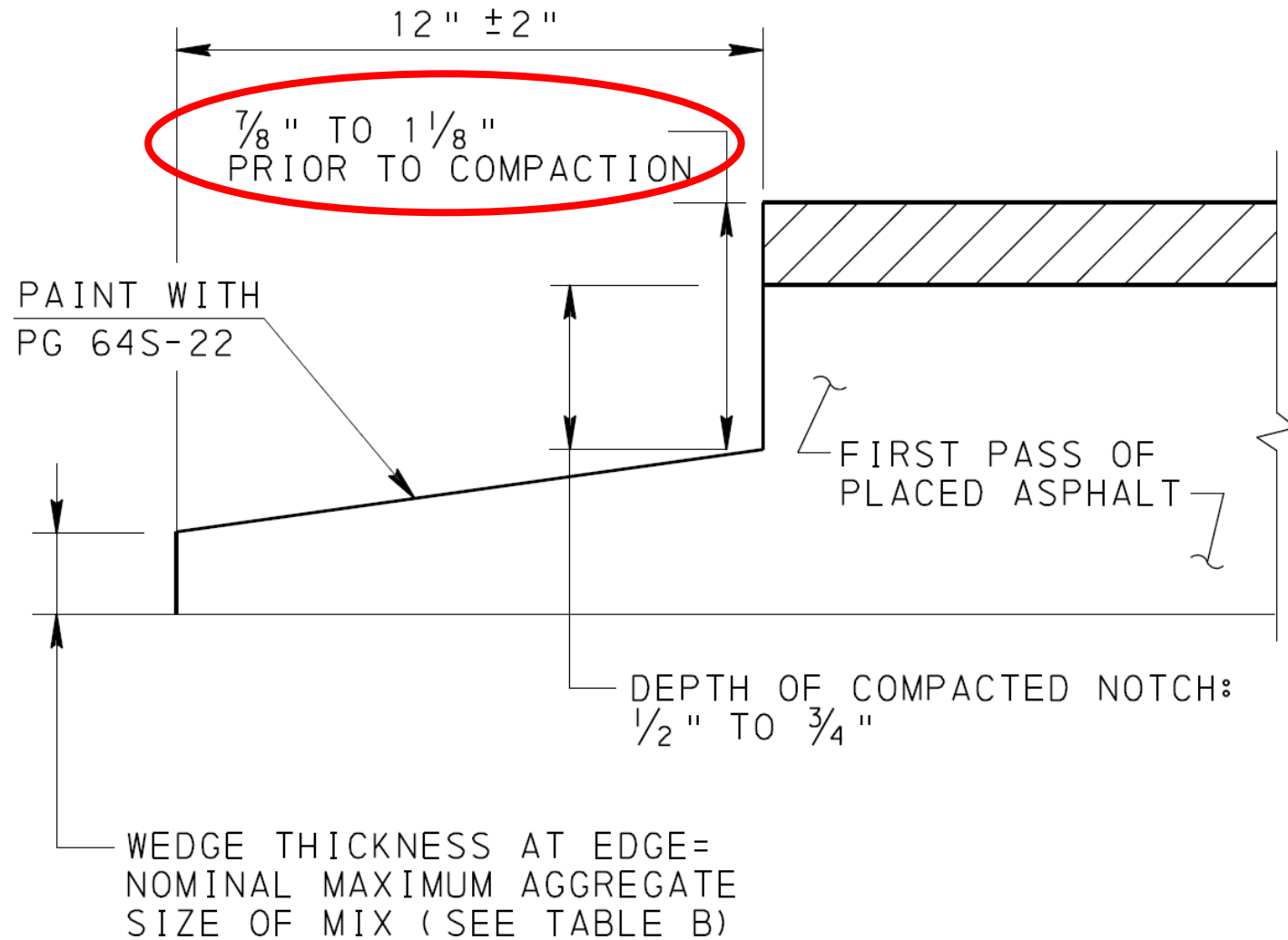
# RC-28M LONGITUDINAL NOTCHED WEDGE JOINT



LONGITUDINAL NOTCHED WEDGE JOINT



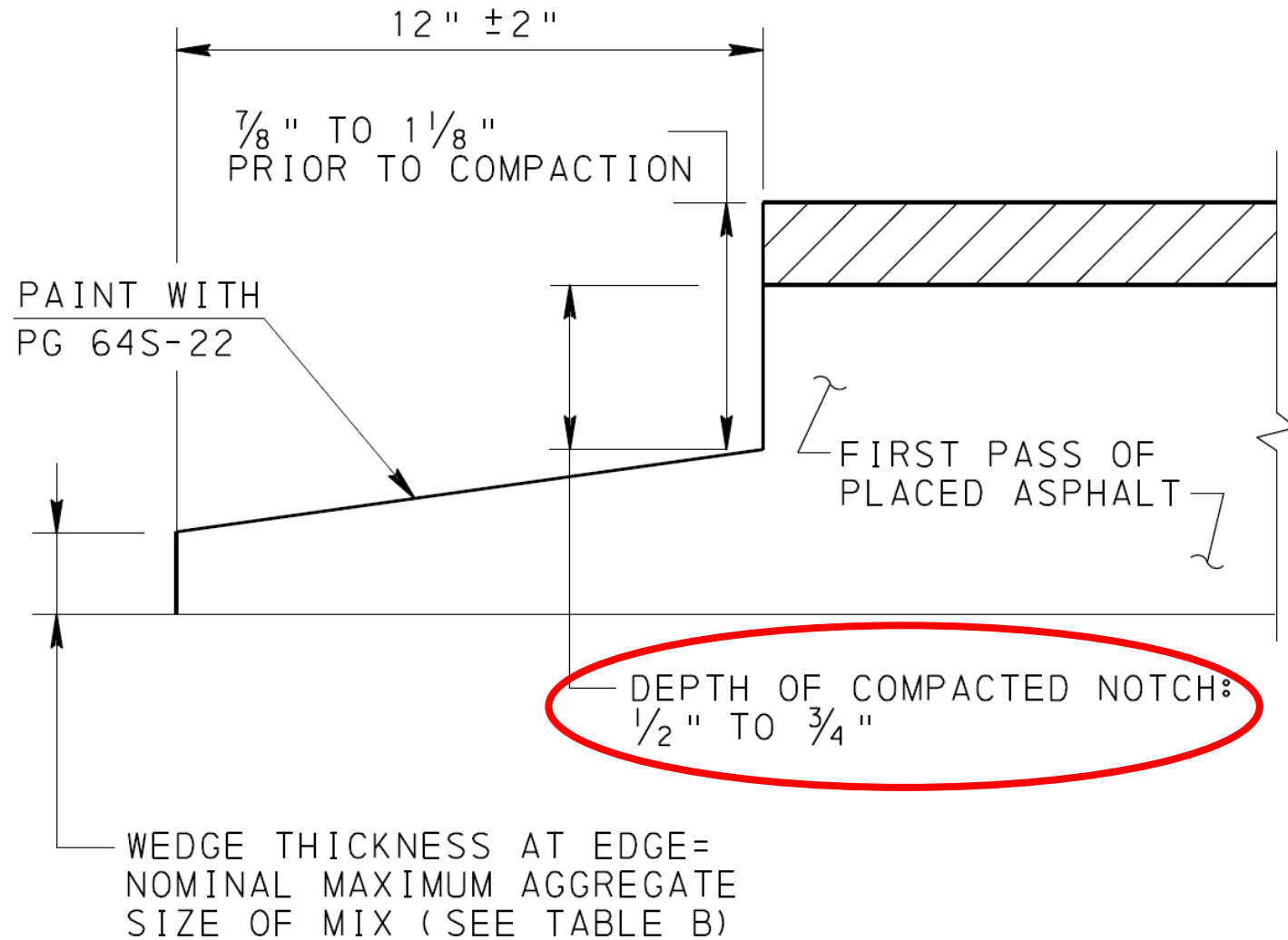
# RC-28M LONGITUDINAL NOTCHED WEDGE JOINT



LONGITUDINAL NOTCHED WEDGE JOINT



# RC-28M LONGITUDINAL NOTCHED WEDGE JOINT



LONGITUDINAL NOTCHED WEDGE JOINT

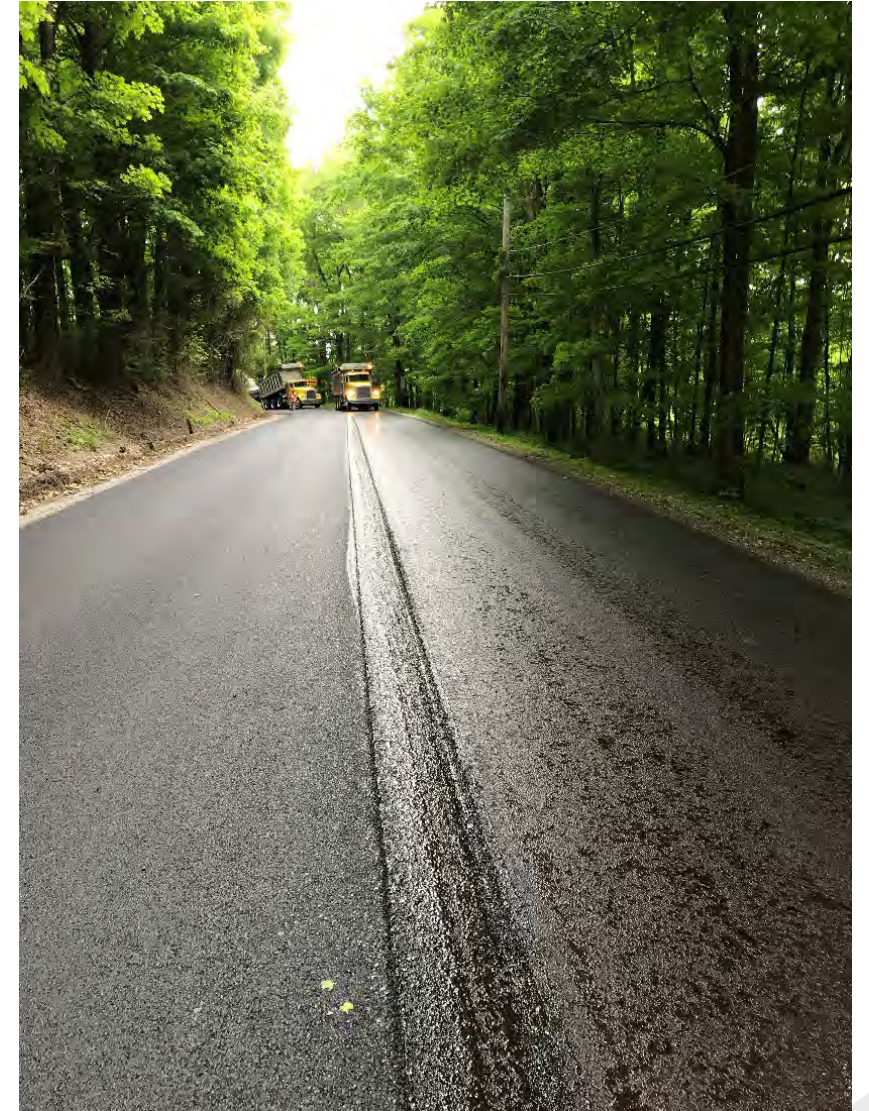




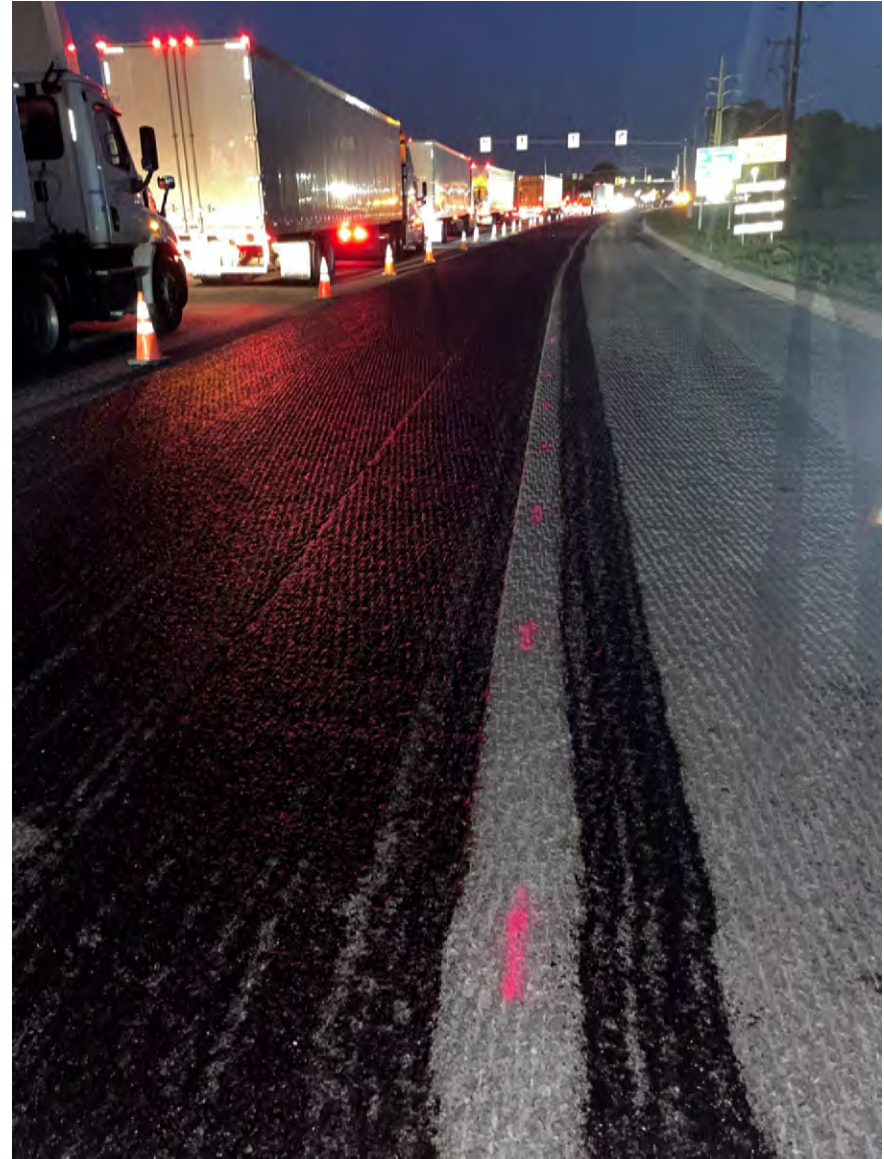
# TRUE LINE WHEN PAVING



# TRUE LINE WHEN PAVING



# TACK COAT APPLICATION



# TACK COAT APPLICATION



# TACK COAT BEYOND THE LIMITS OF PAVING



# TACK COAT BEYOND THE LIMITS OF PAVING



# TUNNEL AND AUGER EXTENSIONS



# TUNNEL AND AUGER EXTENSIONS





# HOPPER INSERT



# SAFETY EDGE



# HOLES IN THE TRUCK BED



- The temporary waiver related to the holes in the truck beds issued on June 10<sup>th</sup>, 2022 **expired** on December 31<sup>st</sup>, 2022.
- Asphalt producers shouldn't be loading trucks that do not have holes in the truck beds when delivering material to Department projects.



**Questions or Comments??**

